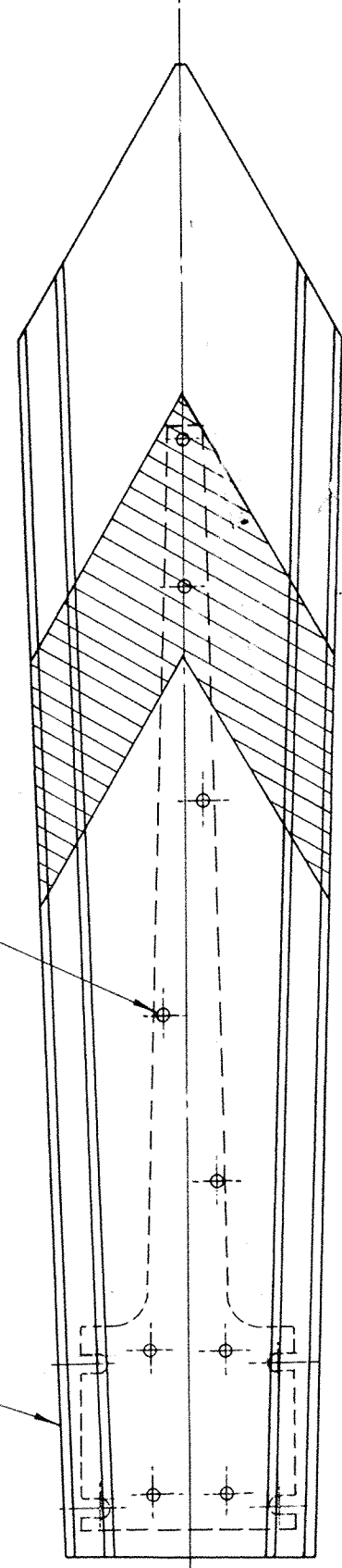
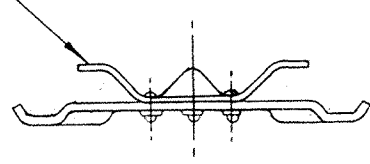


9 - $\frac{3}{16}$ " Copper Rivets, $\frac{3}{8}$ " long
& $\frac{1}{4}$ " Brass Eyelets.

IHI248



4HI248

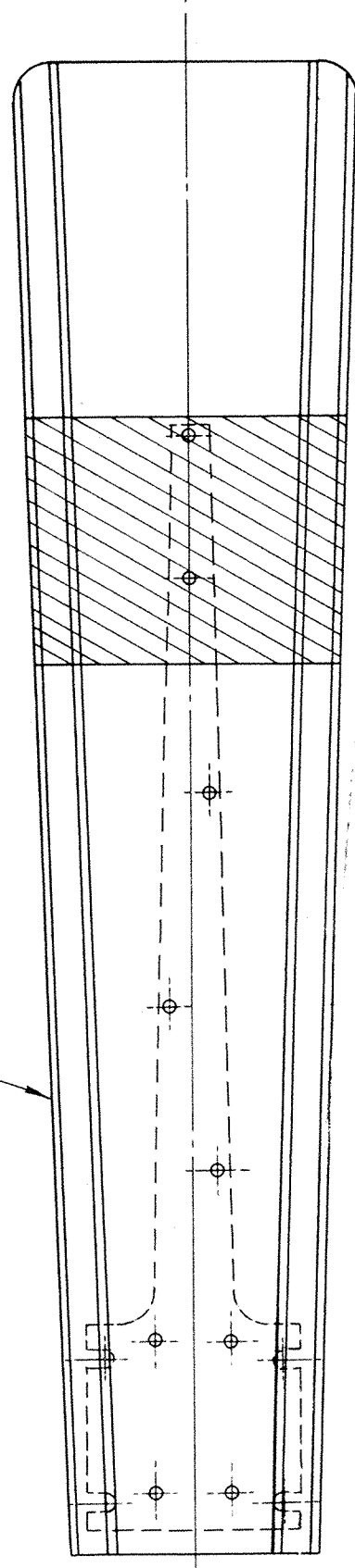


Front - Red with White stripe.
Back - White with Black stripe.

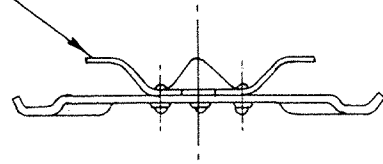
POINTED ENDED BLADE

IHI246

2HI248



5HI248



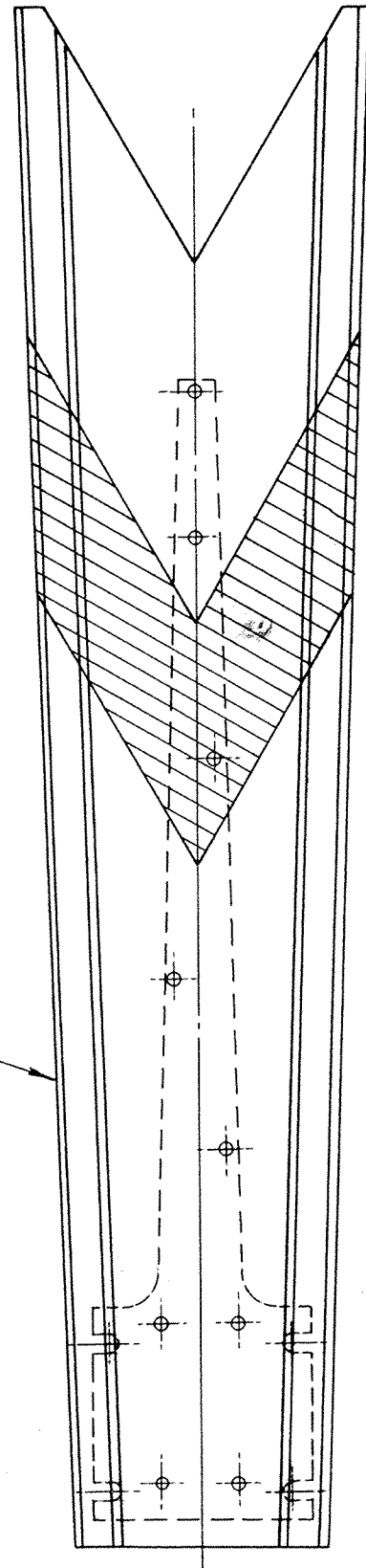
Front - Red with White stripe.
Back - White with Black stripe.

Note - for further information see IHI246.

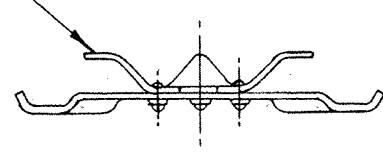
SQUARE ENDED BLADE

2HI246

3HI248



6HI248



Front - Yellow with Black stripe.
Back - White with Black stripe.

Note - for further information see IHI246.

HI246

FISHTAIL ENDED BLADE

3HI246

VICTORIAN RAILWAYS
SEMAPHORE SIGNAL BLADES
UPPER QUADRANT
ASSEMBLY

For enamelling
instructions
see HI248

Sig. & Tel.
Engineer.

RMH.

Drawn by
RMH.

Traced by
RMH.

HI246

23-12-63